



NEW URBAN ENERGY

IDEO
RAMA 9 - ASOKE

www.ideothailand.com

模拟图画仅为广告用
* Simulated images are for advertising purposes only.

LOCATION

URBAN ENERGY REVOLVES AROUND YOU

作为都市能量聚集的中心，IDEO RAMA9-ASOKE 将让你享受居住、工作和娱乐的每一面生活
尽在繁荣的RAMA 9中央商务区，享受多彩缤纷的生活

从项目到地铁蓝色线 Phra Ram 9 (拉玛九) 站只需不过450米，几分钟步行即可搭乘曼谷最便捷交通设施。地铁蓝色线还与 BTS 线与机场快线交汇相连，意味着曼谷全城皆在你的脚下。不仅如此，项目位置还与 Phetchaburi 路、Asoke-Din Deang 路、Vibhavadi 路及 Si Rat 高速相连，可让搭车和自驾出行更加方便。拉玛九作为商务办公楼的聚集区，像 AIA 大楼和 G Tower 这样的淘气大楼都耸立在此。此区域紧挨 Asoke 商区，在满足区域住户生活需求的基础上，还具备潜力巨大的未来升值空间。

Being at the center of urban energy, you will be able to enjoy all of your modes of life-live, work, and play-at IDEO RAMA 9-ASOKE.
Living a Vibrant Life in the Lively Rama 9 Central Business District.

With the Phra Ram 9 MRT train station (Blue Line) being not more than 450 meters* away from our site, you will be able to reach virtually all major parts of Bangkok at the best convenience. The Blue Line also links you to the BTS and the Airport Rail Link train systems, connecting you with the rest of the city. Our location also grants you quick access to Phetchaburi Rd., Asoke-Din Deang Road, Vibhavadi-Rangsit Road and the Si Rat Expressway. Thanks to these major routes, you will be able to go pretty much anywhere in and out of the city. What's more, the Rama 9 neighborhood is a hub of modern offices, such as the AIA Capital Center and the G Tower; it is also an extension of the well-established Asoke community, offering room for future growth and meeting the residential and professional demands of the millennials.

*วัดระยะจากขอบเขตที่ดินที่ตั้งบันไดทางลงสถานีรถไฟฟ้า MRT สถานีพระราม 9 จนถึงขอบเขตที่ดินโครงการที่ใกล้ที่สุด ภาพจำลองเพื่อการโฆษณาเท่านั้น
*Measured from the property line where the stairs to the station is located to the nearest property line of the development. * Simulated images are for advertising purposes only.



NEW URBAN ENERGY

这座令人惊叹的项目将激发你的能量，解锁你的潜力，居住、工作或娱乐都将在“用创意拓展生活”这一理念下变得更加多彩。便捷的交通能够让你快速通达最潮最热门的风尚场所之余，社区公共区域还被设计成多元空间，使之区别于他，让生活的节奏随能量而律动。

This ground-breaking development will boost your energy and unleash your potential-whether you want to live, work or play-under the concept “Ideas That Expand Your Living Dimensions.” On top of its proximity to the city’s train systems and urban lifestyle destinations, the common areas of the condominium have been designed as hybrid spaces, setting new standards for other condominiums and letting you feel the energy flowing through you with every rhythm of life.

IDEOx

StreetArtSeries

街头艺术家

舒适之余，个性公寓还应反映住户特质。我们怀着这一设计信念，在过去的项目中与知名街头艺术家 Rukkit 合作设计过雕塑和公共区域。打造潮流住宅的信念也同样在 IDEO RAMA9 - ASOKE 得到延续，这一次，我们与泰国著名的街头艺术家及平面设计师 P7 联手，共同描绘最新的都市住宅神话。

*P7：泰国先进的Street Artist / Graphic designer 艺术家

On top of comfort, a good condominium should also reflect the personality of its residents. This understanding has led us to work with Thailand's leading street artist Rukkit in the design of unique sculptures and common areas. This type of collaboration continues to the development of IDEO RAMA 9-ASOKE. This time, we have teamed up with P7* to create new urban-living phenomena.

*One of Thailand's leading street artists / graphic designers.

LIVE



PLAY



IDEO RAMA9 - ASOKE x P7

打破常规，重塑观念，我们与P7联手，将住宅的每一入微细节做了个性揉捏，将 P7 的创意设计融合在公共区域之中。满聚能量迸发而出的创意线条与色彩，打造出丰富活跃社区环境，不失功能性，且散发着浓浓的街头潮流酷味。

*P7：泰国先进的Street Artist / Graphic designer 艺术家

To break into a new dimension of urban living where every detail is turbocharged, we are incorporating *P7's creations into our common areas. Full of inspirational lines and vibrant colors, his works of art will create a portal into dynamic dimension where functionality and street art exist side by side.

*One of Thailand's leading street artists / graphic designers.

文句和模拟图画仅为广告用，公司保留权利于更改所注明的细节，而不事先通知

*Content and simulated images are for advertising purpose only and the company reserves the right to change the project's details without prior notice.



DOUBLE CONVENIENCE **双倍便捷**

24 小时超市和共享工作空间让生活的便捷翻倍

Your life will get double the convenience thanks to our onsite 24-hour supermarket and co-working space.

YOUR LIVING IS YOU

你就是你生活的全部

IDEO RAMA 9-ASOKE 凭前沿科技为手，为你解锁全新层面的便捷、舒适与住宅安全，映射始终前进的生活。移动接入应用（Mobile Access）*，使用手机就可以操控公共区域，社区内还有电动汽车充电器**。其他所有设施都应对居住-工作-娱乐的需求而设，满足不同年龄段的现代都市人的生活方式，充分实现了“功能性满分”的配套设施。

*手机可开连接住宅楼与公共区域的门 **电动汽车充电器

IDEO RAMA 9-ASOKE introduces cutting-edge innovations to boost your convenience, comfort and safety, reflecting your evolving lifestyle trend. With Mobile Access*, your smartphone will act as a key to common areas. There will also be electric vehicle chargers** onsite. Other facilities have been designed to meet the live-work-play demands of modern urbanites of all ages under the concept of “facilities with full functionality,” which focuses on active spaces and their adaptability to different needs.

*Access to buildings and common areas. **Chargers only. They are part of the common property. Fees apply.



450 米到达 PHRA RAM 9 地铁站

*按照从项目到地铁站的最近距离衡量

450 METERS* FROM PHRA RAM 9 MRT STATION

*Measured from the property line where the stairs to the station is located to the nearest property line of the development.



双倍便捷

24/7 超市及共享工作空间

DOUBLE THE CONVENIENCE

24/7 supermarket and co-working space onsite



移动接入应用及电动汽车充电器

*手机可开连接住宅楼与公共区域的门 **电动汽车充电器是公共财产的一部分

MOBILE ACCESS* AND EV CHARGER**

*Your smartphone acts as the key to the building and common areas. **Chargers for electric vehicles are part of the common property. Fees apply.



IDEO X 街头艺术系列 – P7 打造创意公共区域

*泰国知名的街头艺术家及平面设计师

IDEO X STREET ART SERIES The common areas stand out with creative design ideas from P7*.

*Thailand's leading street artist and graphic designer.



多元娱乐空间

放松区、篮球场、小型足球场和慢跑道广泛相连

HYBRID PLAYSCAPE The leisure zone, basketball court, futsal court and jogging track are all interconnected.



公共区域的多元家具配套让您得享更多功能

HYBRID FURNITURE in the common areas let you take full advantage of the space.



双层多元空间具备多种功能，工作、放松、娱乐统统不在话下

HYBRID SPACE This 2-level zone is designed for varying purposes, including work, relaxation and having fun with the playground tube.



小型露天剧场 休闲工作空间兼备剧场功能，嵌入式投影仪*可享观影愉悦或足球游戏

*根据物业条款和可用性而定

AMPHITHEATRE This laidback work space doubles as a theater for movies for games of soccer thanks to its built-in projector* and screen.

*Subject to regulations of the juristic person and availability.



能量健身房 的虚拟健身课程和拳击空间位于高空室外，可享受更多景致

ENERGYM The opened air virtual exercise class and boxing zone maximize the city view for exercisers.



多元高空泳池 主打水下单车和30米健身泳池

HYBRID SKY POOL This is a phenomenal pool, featuring aqua biking and a 30-meter lap pool.

HYBRID PLAYScape

多元娱乐空间

篮球、足球、慢跑
等多种功能融合的多元娱乐空间能够将生活方式发挥至更加多彩，
呈现一种“空间中的空间”的娱乐体验

Active and flexible in nature, this common area will meet the demand of a diverse range of lifestyles under the concept “Space in Space.” The use of the space adapts to its current necessity. Whether you need a basketball court, a futsal court or a jogging track, this space will adapt to your demand.





ENERGETIC CO-WORKING SPACE

高能共享工作空间

从气派的大堂到拥有城市风景的高空设施，
灵活的空间设计和多元的家具配套能让你无论行走各处，
都能找到属于自己的一方工作空间。

Almost anywhere onsite will be able to become your very own
co-working space thanks to the flexible space design and hybrid furniture,
meeting modern urbanites' demand in different settings, such as working
in the lobby or contemplating with views of the city's skyscrapers.



*Content and simulated images are for advertising purpose only and the company reserves the right to change the project's details without prior notice.



HYBRID SPACE 多元空间

双层多功能区域被分割成多个小区域以供不同用途。不管是安静放空，还是欣赏城市风景，或者尽兴于娱乐设施，皆可随心所欲。

The 2-level multipurpose area will be subdivided into smaller zones that cater to different uses, depending on your mood, such as quiet contemplation, kicking back and gazing upon the cityscape, or having fun with the playground tube.

AMPHITHEATRE

小型剧院

这片舒适角落在为你带来 G Tower 的独特风景之余，还可利用嵌入式投影仪及屏幕享受观影愉悦或足球游戏。

* 基于项目法人的规定，及当时的预订情况。

This cozy space will let you work to the majestic view of the G Tower and also double as a theater where you can watch movies or soccer matches thanks to the built-in projector* and screen.

* Subject to the regulations of the juristic person and availability.



ENERGYM

能量健身房

在能量健身房，你的能量之火与室内的能量线条相得益彰。虚拟练习课程和拳击区域还被特意设计成向外伸出的样式，以享受更多城市美景。

This EnergyM will ignite your fire with its decorative lines. The virtual exercise class studio and boxing zone are designed to stand in opened air, giving you maximum exposure of the views.



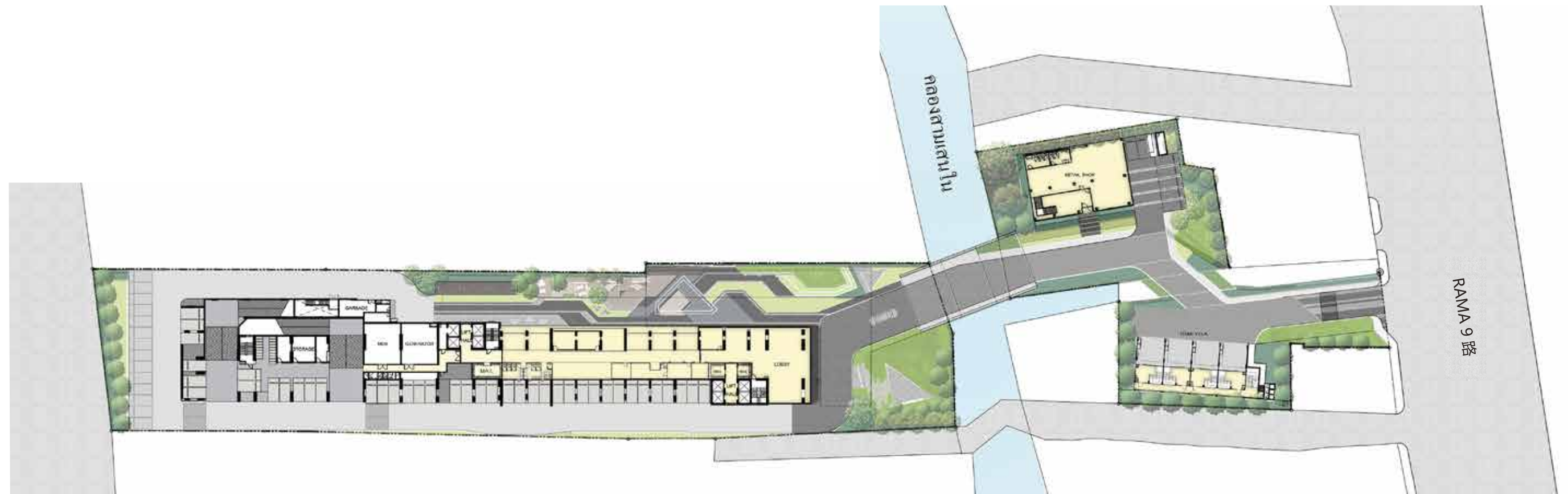


HYBRID SKY POOL 多元高空泳池

配备有水下车和
30 米健身泳池的游泳配套大大丰富了水中体验，
让运动更显多元。

Enjoy an exciting workout in the Hybrid Sky Pool,
featuring aqua biking and a 30-meter lap pool.

规划图 MASTER PLAN



楼层图 FLOOR PLAN



8th - 12A 平面图 8th - 12A Floor plan



14th - 21st 平面图 14th - 21st Floor plan



楼层图 FLOOR PLAN



22nd – 29th 平面图 22nd - 29th Floor plan



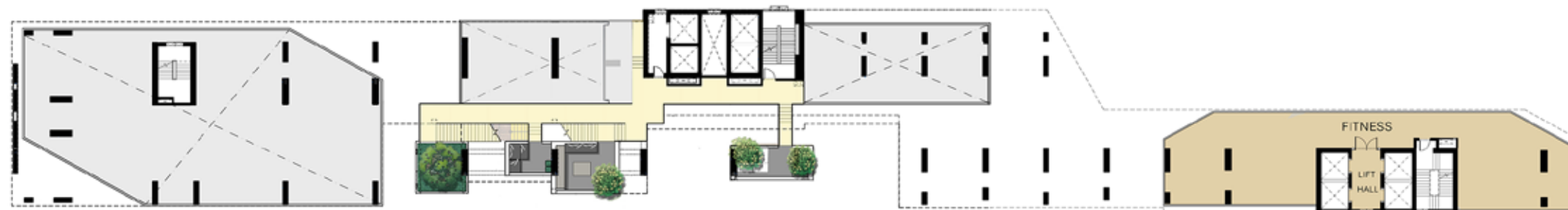
30th – 35th 平面图 30th - 35th Floor plan



楼层图 FLOOR PLAN



36th 平面图 36th Floor plan



36M 平面图 36th Floor (Mezzanine)



户型图 UNIT PLAN



*Photograph taken on location with simulated atmosphere for advertising purposes only.

户型图 UNIT PLAN



STUDIO A1-1

26.00 sq.m.

使用面积及柱子位置的分配，基于房间所在位置 公司保留权利于依所注明细节之更改而不必先通知，及所注明的面积规格只是大约的，家具的摆设及各面积的分配，包括各种细节，只是使用面积的摆设图样例子，及只为广告用。

*The location of each residence dictates its unit layout and pillar positions. The company reserves the right to change without prior notice. The identifying areas are approximately. Contents and simulated images are for advertising purpose only. The show layout are simulated utilize function only.



1 BEDROOM B1-1
31.00 sq.m.



1 BEDROOM B2-1
34.00 sq.m.



2 BEDROOM C1-1
60.50 sq.m.



2 BEDROOM C3-1
52.00 sq.m.

FACTSHEET

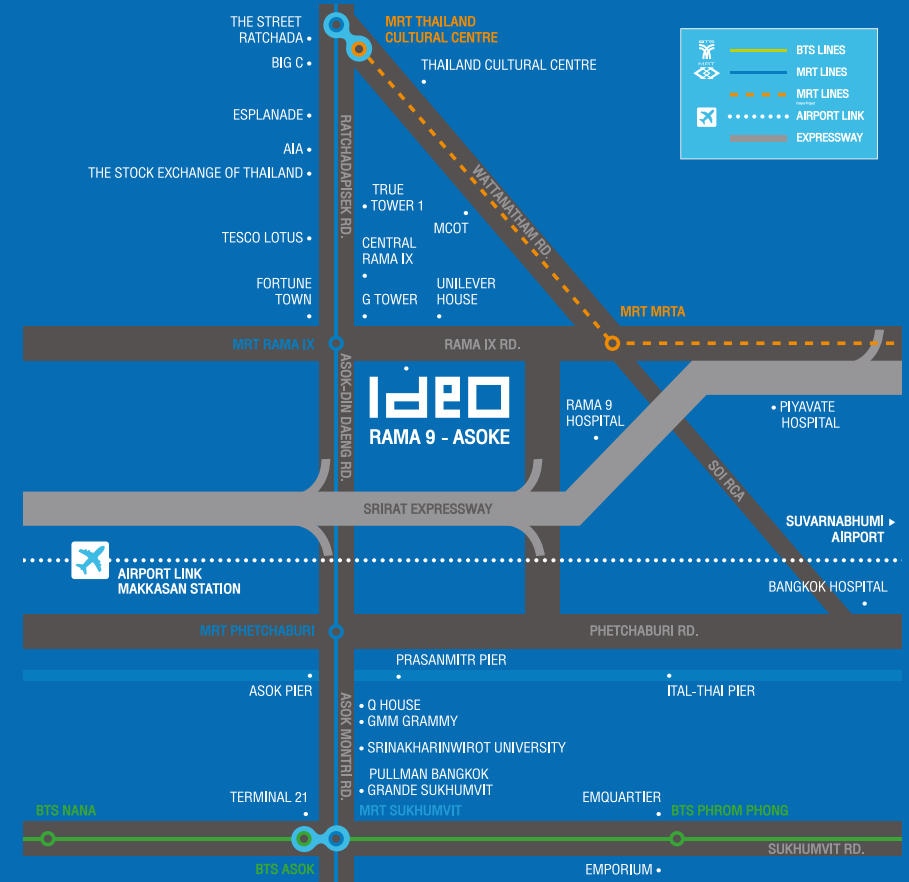
项目信息

项目名称	IDEO RAMA 9 - ASOKE
项目地址	Rama 9 Rd, Huai Khwang, Bangkok
项目面积约	5-2-70.50 莱
项目形态	住宅公寓 1 栋, 高36 层。 商业用楼 1 栋, 高2 层。 Town Villa 楼 1 栋, 高4 层。
总单元数	1,222 单元
总住宅单元	1,216 单元
商铺数	2 单元
Town Villa 公寓数目	4 单元
停车位	527 个
客梯	7 部
货梯	1 部

大楼	细节
G 楼	大堂、信箱室、物业办公室、会议室、花园、多功能区域、停车场
2 – 7 楼	停车场
7 楼	花园*
8 – 35 楼	住户
36 – 36 楼	游泳池、健身房、小型剧院、多功能区域
屋顶	花园**

Project	IDEO Rama 9–Asoke
Location	Rama 9 Rd., Huai Khwang, Bangkok
Approx. Project Area	5-2-70.5 Rai
Building	One 36-Storey Residential Building One 2-Storey Commercial Building One 4-Storey Town Villa Building
No. of Units	1,222 Units
No. of Residential Units	1,216 Units
No. of Commercial Units	2 Units
No. of Town Villa Units	4 Units
Parking	527 Spaces
Passenger Elevator	7 Elevators
Service Elevator	1 Elevator

Level	Functions
G	Lobby, Mailbox area, Juristic person office, Meeting room, Garden, Multipurpose area, Parking
2–7	Parking
7	Garden*
8–35	Residential units
36–36M	Swimming pool, Fitness studio, Theater area, Multipurpose area
Rooftop	Garden**



* 7楼绿色庭院面积, 属于公共面积, 每位共同拥有人都可以利用

** 36 楼乘客电梯的走廊大厅, 属于公共面积, 每位共同拥有人都可以利用 (上去阳台要经过36 楼乘客电梯的走廊大厅, 及消防楼梯)。

*The common garden on the 7th floor is part of the common property to which all co-owners of the condominium have access.

**The passenger elevator in the hallway on the 36th floor is part of the common property to which all co-owners of the condominium have access. (To access to the rooftop, one must use the hallway on the 36th floor and the fire escape.)

Ideo Rama9 - Asoke Condominium project is developed by Ananda MF Asia Phraram 9 Two Co., Ltd. — The company has a registered capital of 100,000 Baht (One Hundred Thousand Baht Only) (paid-up), head office is located at 99/1 Moo 14 Soi Wind Mill Village, Bang Na–Trad Rd., (KM 10.5), Bang Phli Yai Sub-district, Bang Phli District, Sumut Prakan Province, Managing Director is Mr.Chanond Ruangkritya. The project is located on Rama9 Road, Huai Khwang Sub district, Huai Khwang District, Bangkok Province. The title deed no., 3816, 5503, 6113, 6114, 6115, 6116,6117,6118,6119,6120,6121,6122,6123,6124,6125,6126,6127 Huai Khwang Sub district, Huai Khwang District, Bangkok Province. The total project area is approximately 5-2-70.50 Rai. The Project will be constructed as 1 residential building (36 storeys), 1 Town Villa (4 storeys), and 1 commercial building (2 storeys) consisting of 1,220 residential units and 2 commercial units, totaling 1,222 units. Common properties include a swimming pool, a fitness room, garden and a multi-purpose room. The project has financial obligations TMB Bank Public Company Limited. The project currently is in the process of obtaining an environmental permit and will obtain a construction permit at a later date. Construction is expected to commence in October 2019 and to be completed approximately in October 2022. It will be registered as a condominium upon completion. The owner of each unit is responsible for fees and taxes outlined in the Condominium Act.