

**ASHTON**  
ASOKE - RAMA9



**THE ALPHA & OMEGA**  

---

**THE FIRST & THE LAST**

# THE DAWN OF THE INFINITE POTENTIAL

GROUND ZERO OF YOUR ULTIMATE LEGACY,  
WHERE YOU CAN FORESEE THE FUTURE.

230 M.\*\*  
950 M.\*\*\*  
1 STATION  
2 STATIONS

TO MRT PHRA RAMA 9 STATION  
FROM AIRPORT LINK MAKKASAN  
TO MRTA ORANGE LINE INTERCHANGE\*\*\*\*  
TO BTS-ASOKE INTERCHANGE



\*\*FUTURE PROJECT, ANANDA DOES NOT HAVE ANY CONTROL OVER OTHER DEVELOPERS PROJECT PLAN IN THE FUTURE.  
\*\*MEASURE THE DISTANCE FROM THE LAND TO THE STAIRS TO MRT-RAMAD STATION, UP TO THE NEAREST LAND PLOT.  
\*\*\*MEASURE THE DISTANCE FROM THE LAND TO THE STAIRS TO AIRPORT LINK MAKKASAN, UP TO THE NEAREST LAND PLOT.  
\*\*\*\*CONSTRUCTION WILL BE COMPLETED IN 2023.

CONTENTS AND SIMULATED IMAGES ARE FOR ADVERTISING PURPOSE ONLY AND THE COMPANY RESERVES THE RIGHT TO CHANGE THE PROJECT'S DETAILS WITHOUT PRIOR NOTICE.

# ASHTON ASOKE - RAMA 9

THE DAWN OF A NEW FRONTIER



\*CONTENTS AND SIMULATED IMAGES ARE FOR ADVERTISING PURPOSE ONLY AND THE COMPANY RESERVES THE RIGHT TO CHANGE THE PROJECT'S DETAILS WITHOUT PRIOR NOTICE.



IMAGES IS FOR ADVERTISING PURPOSES ONLY.

## RELISH IN THE MOMENT

ENJOY THE SCENIC CITYSCAPE FROM THE DAZZLING PERSPECTIVE  
OF ALPHA AND OMEGA SKYSCRAPERS ALONG WITH AN ARRAY OF FIRST CLASS FACILITIES  
AND AMENITIES TO FULFILL YOUR EXQUISITE LIFESTYLE.



BIKE  
SIMULATOR

IMAGES IS FOR ADVERTISING PURPOSES ONLY.

- THE ALPHA GRAND LOBBY
- INFINITY-EDGE SWIMMING POOL
- FITMOSPHERE\*
- BOXING STUDIO
- BIKE SIMULATOR
- FUNCTIONAL TRAINING STUDIO
- SKY SOCIAL CLUB

## EXPERIENCE A NEW HEIGHT

RELISH IN AN ALPHA LIFESTYLE WITH TOP NOTCH FACILITIES AND AMENITIES  
EXCLUSIVELY DESIGNED FOR YOUR ULTIMATE PLEASURE.



SKY  
SOCIAL CLUB

IMAGES IS FOR ADVERTISING PURPOSES ONLY.



IMAGES IS FOR ADVERTISING PURPOSES ONLY.

- THE OMEGA GRAND LOBBY
- INFINITY-EDGE SWIMMING POOL
- FITMOSPHERE\*
- YOGA STUDIO
- CO-WORKING SPACE
- CO-KITCHEN SPACE
- MASSAGE

## RESTORE AND REVIVE

REVIVE IN A CALM AND RELAXING OMEGA ATMOSPHERE, ESPECIALLY  
DESIGNED FOR UTMOST REVITALIZATION.



IMAGES IS FOR ADVERTISING PURPOSES ONLY.

\*FITMOSPHERE = FITNESS.  
TEXT AND RENDERED IMAGES ARE FOR ADVERTISING PURPOSES ONLY. THE COMPANY RESERVES THE RIGHT TO MODIFY THE DETAILS SPECIFIED HEREIN WITHOUT PRIOR NOTICE.

TEXT AND RENDERED IMAGES ARE FOR ADVERTISING PURPOSES ONLY. THE COMPANY RESERVES THE RIGHT TO MODIFY THE DETAILS SPECIFIED HEREIN WITHOUT PRIOR NOTICE.

ALL CORNER WINDOW UNIT  
WITH BAY WINDOW

SINCE EVERY ROOM IS A CORNER UNIT, THE WINDOW SPACE IS MAXIMIZED.  
THIS INGENUOUS DESIGN GIVES EACH ROOM A SWEEPING CITY VIEW  
AND AFFORDS MUCH IMPROVED VENTILATION.

TWO BEDROOMS

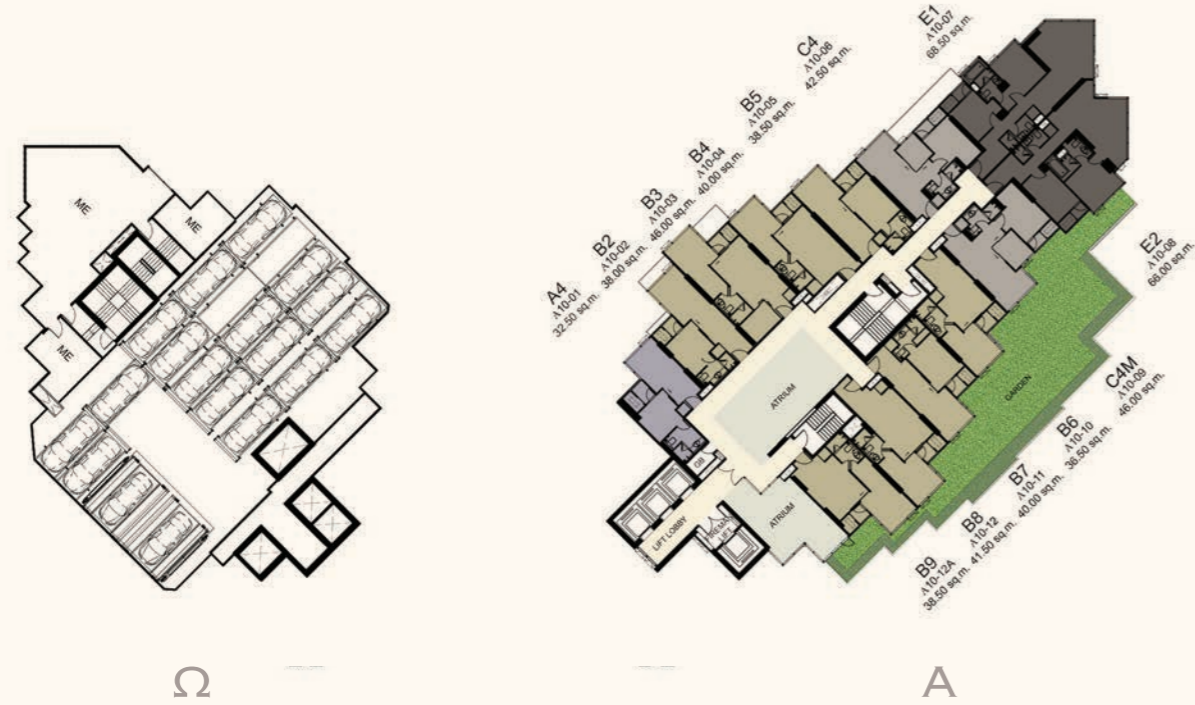
IMAGES IS FOR ADVERTISING PURPOSES ONLY.



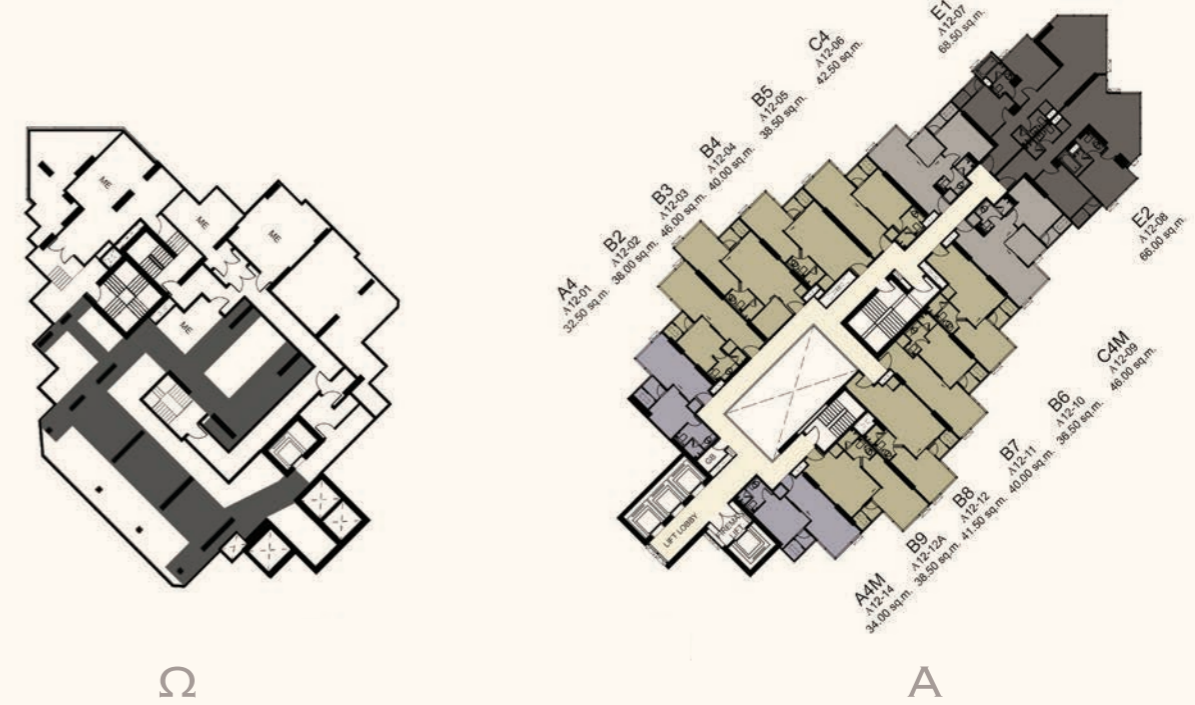


FLOOR PLAN

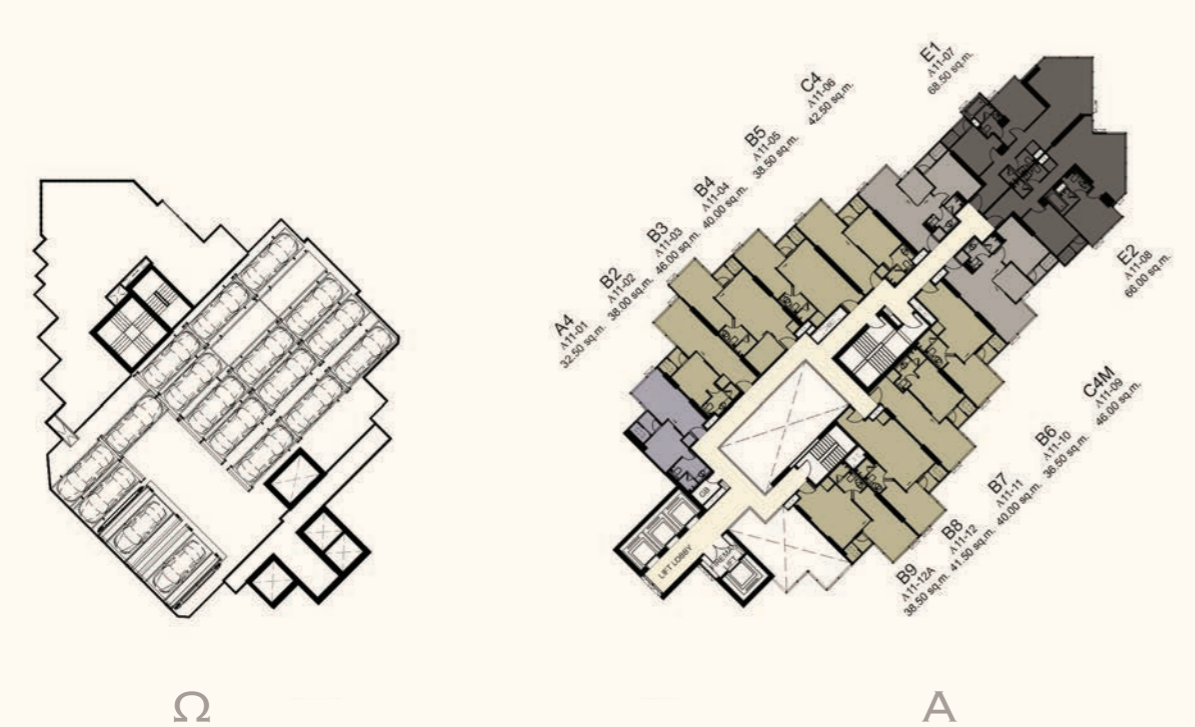
10<sup>TH</sup> FLOOR



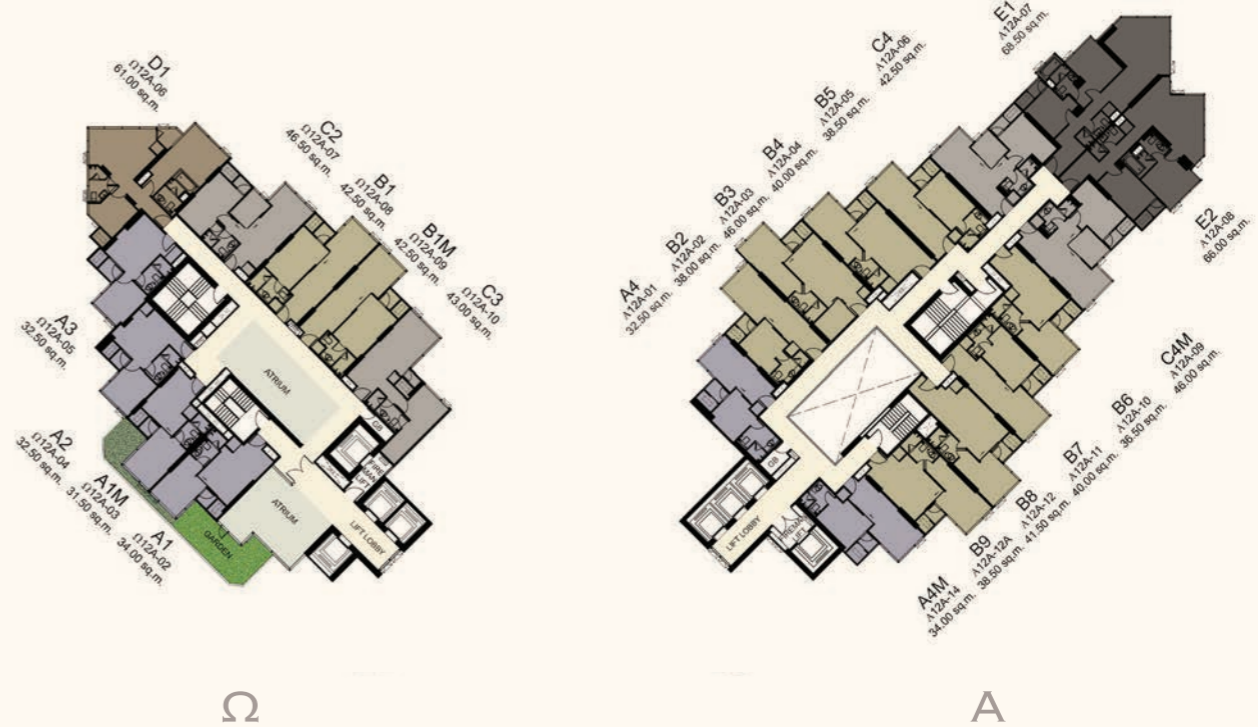
12<sup>TH</sup> FLOOR



11<sup>TH</sup> FLOOR



12A<sup>TH</sup> FLOOR



FLOOR PLAN

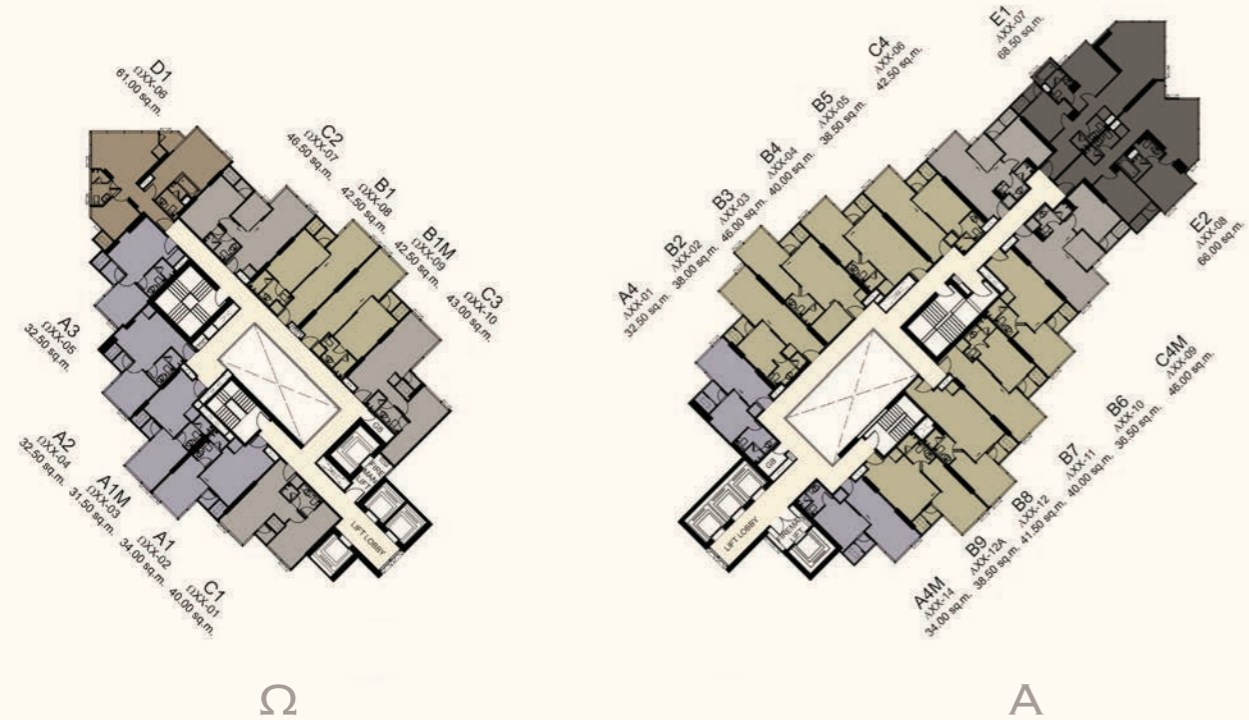
14<sup>TH</sup> FLOOR



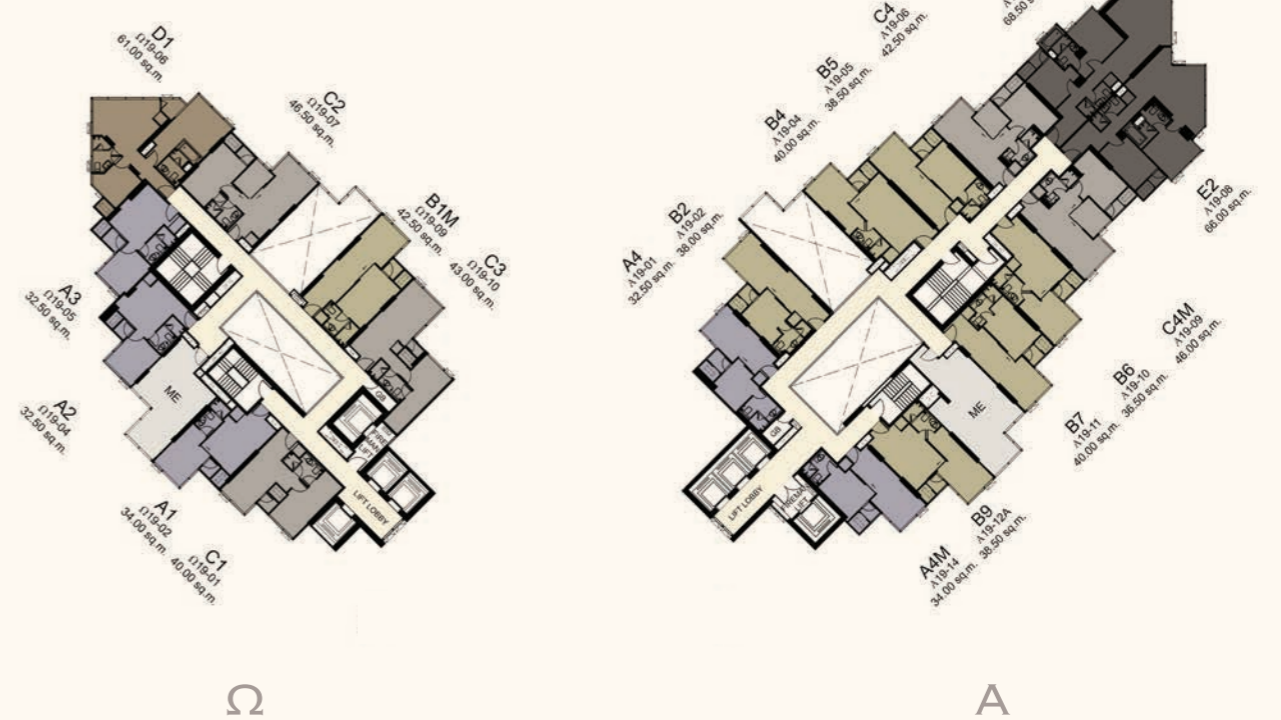
18<sup>TH</sup> FLOOR



15-17<sup>TH</sup> , 22-26<sup>TH</sup> FLOOR



19<sup>TH</sup> FLOOR



Ω

A

Ω

A

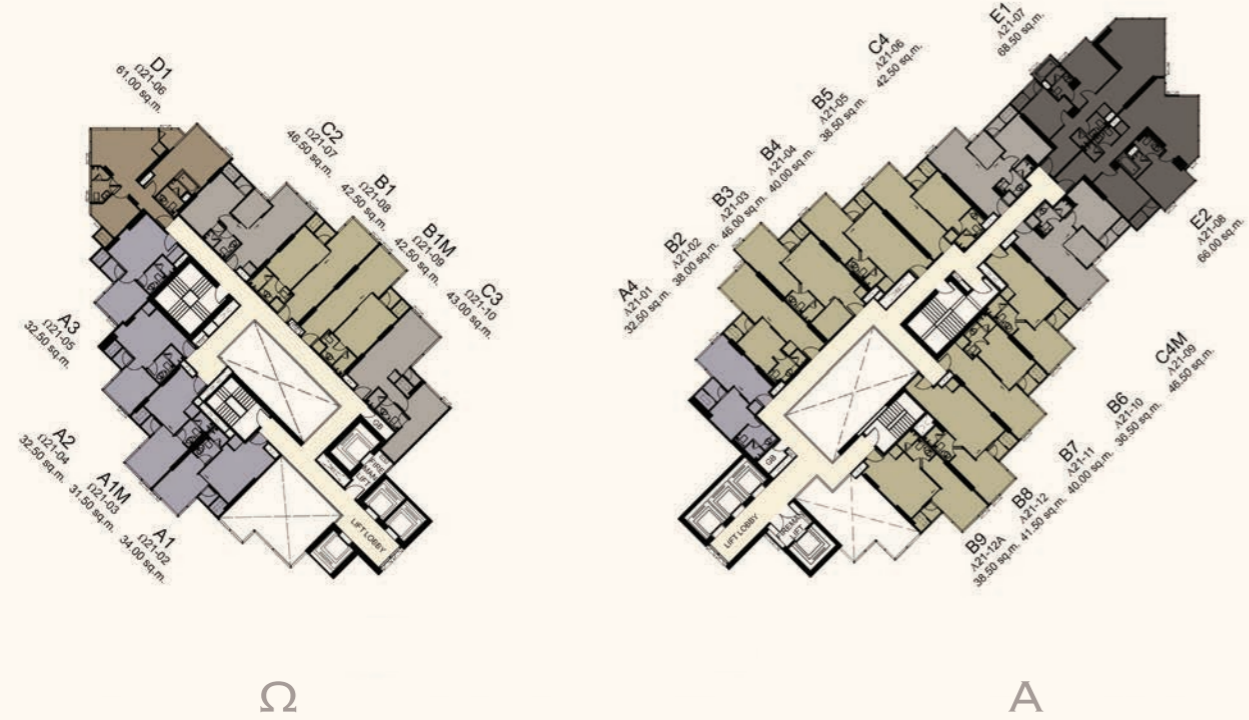


FLOOR PLAN

20<sup>TH</sup> FLOOR



21<sup>TH</sup> FLOOR



THE DEVELOPER RESERVES THE RIGHT TO CHANGE WITHOUT PRIOR NOTICE.  
 THE IDENTIFY AREAS ARE APPROXIMATELY.  
 CONTENTS AND IMAGES ARE FOR ADVERTISING PURPOSE ONLY.  
 THE SHOW LAYOUT ARE SIMULATED UTILIZE FUNCTION ONLY.

ALPHA



CONTENTS AND SIMULATED IMAGES ARE FOR ADVERTISING PURPOSE ONLY AND THE COMPANY RESERVES THE RIGHT TO CHANGE THE PROJECT'S DETAILS WITHOUT PRIOR NOTICE.

A4 :  
32.50 SQ.M.



B2 :  
38.00 SQ.M.



A4 M :  
34.00 SQ.M.



B3 :  
46.00 SQ.M.



B4 :  
40.00 SQ.M.



B6 :  
36.50 SQ.M.



B5 :  
38.50 SQ.M.



B7 :  
40.00 SQ.M.



B8 :  
41.50 SQ.M.



C4 :  
42.50 SQ.M.



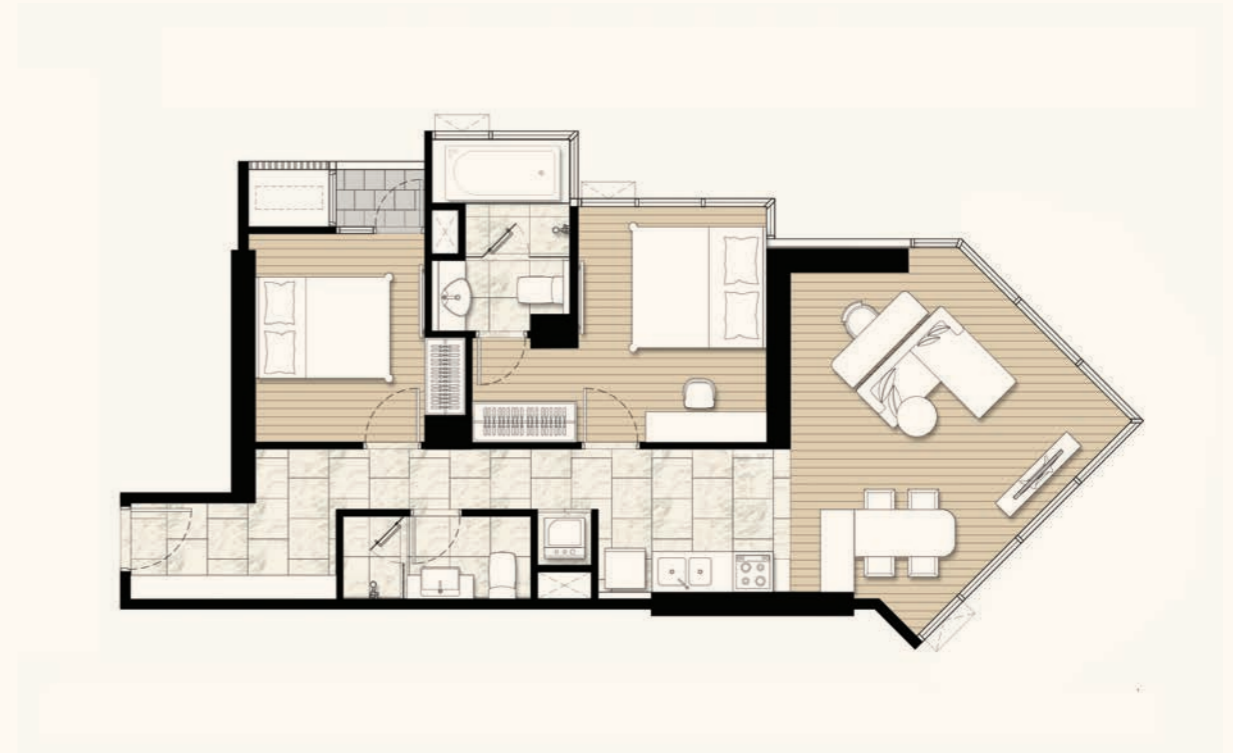
B9 :  
38.50 SQ.M.



C4M :  
46.00 SQ.M.



E1 :  
68.50 SQ.M.



E2 :  
66.00 SQ.M.



A1 :  
34.00 SQ.M.



A1 M :  
31.50 SQ.M.



A2 :  
32.50 SQ.M.



A3 :  
32.50 SQ.M.



OMEGA

B1 :  
42.50 SQ.M.



C1 :  
40.00 SQ.M.



B1 M :  
42.50 SQ.M.



C2 :  
46.50 SQ.M.



C3 :  
43.00 SQ.M.



D1 :  
61.00 SQ.M.





# FACT SHEET

## PROJECT DETAILS

<b>PROJECT AREAS</b>		
TOTAL NO. OF BUILDINGS	2	BUILDINGS
BUILDING ALPHA AND BUILDING OMEGA		
TOTAL NO. OF UNITS	599	UNITS
<b>BUILDING ALPHA - NO. OF RESIDENTIAL UNITS</b>		
BUILDING ALPHA - NO. OF RESIDENTIAL UNITS	353	UNITS
BUILDING ALPHA - NO. OF RETAIL UNITS	4	UNITS
BUILDING OMEGA - NO. OF RESIDENTIAL UNITS	240	UNITS
BUILDING OMEGA - NO. OF RETAIL UNITS	2	UNITS
<b>NO. OF PARKING LOTS</b>		
(INCLUDED PUBLIC PARKING 4 LOTS)	396	LOTS
(FOR RETAILS & VISITORS 30 LOTS)		
<b>NO. OF LEVELS</b>		
BUILDING ALPHA	46	FLOORS
BUILDING OMEGA	50	FLOORS
<b>PASSENGER LIFTS</b>		
BUILDING ALPHA	3	LIFTS
BUILDING OMEGA	3	LIFTS
<b>FIREMAN LIFT</b>		
BUILDING ALPHA	1	LIFT
BUILDING OMEGA	1	LIFT

## LEVEL

## FUNCTIONS

### BUILDING ALPHA

BASEMENT 1	AUTOMATIC PARKING
GROUND FLOOR	LOBBY, MAIL ROOM, PROPERTY MANAGEMENT OFFICE, LAUNDRY COLLECTION POINT, RETAIL, GARDEN, NORMAL PARKING, AUTOMATIC PARKING, M&E
2ND FLOOR	RETAIL, AUTOMATIC PARKING
3RD - 8TH FLOOR	AUTOMATIC PARKING
10TH - 38TH FLOOR	RESIDENTIAL UNITS
40TH - 41ST FLOOR	SWIMMING POOL, JACUZZI, FITNESS, CHANGING ROOMS & WC, SAUNA ROOM, BOXING*, BIKE SIMULATOR*, FUNCTIONAL TRAINING STUDIO*, SKY SOCIAL CLUB, BALCONY
42ND - 43RD FLOOR	RESIDENTIAL UNITS
46TH FLOOR	ROOF DECK

### BUILDING OMEGA

BASEMENT 1	AUTOMATIC PARKING
GROUND FLOOR	LOBBY, MAIL ROOM, PROPERTY MANAGEMENT OFFICE, LAUNDRY COLLECTION POINT, RETAIL, GARDEN, NORMAL PARKING, AUTOMATIC PARKING, M&E
2ND FLOOR	RETAIL, AUTOMATIC PARKING
3RD - 11TH FLOOR	AUTOMATIC PARKING
12TH - 39TH FLOOR	RESIDENTIAL UNITS
41ST - 42ND FLOOR	SWIMMING POOL, JACUZZI, FITNESS, CHANGING ROOMS & WC, STEAM ROOM, YOGA ROOM**, MASSAGE ROOM**, CINEMA ROOM**, CO-KITCHEN**, CO-WORKING SPACE, BALCONY
43RD - 47TH FLOOR	RESIDENTIAL UNITS
50TH FLOOR	ROOF DECK



\*CONTENTS AND SIMULATED IMAGES ARE FOR ADVERTISING PURPOSE ONLY AND THE COMPANY RESERVES THE RIGHT TO CHANGE THE PROJECT'S DETAILS WITHOUT PRIOR NOTICE.

\*\*SUBJECT TO THE RULES AND REGULATIONS OF THE CONDOMINIUM JURISTIC PERSON AND THE AVAILABILITY OF BOOKING PERIOD  
\*TO PROVIDE EQUIPMENT ONLY

