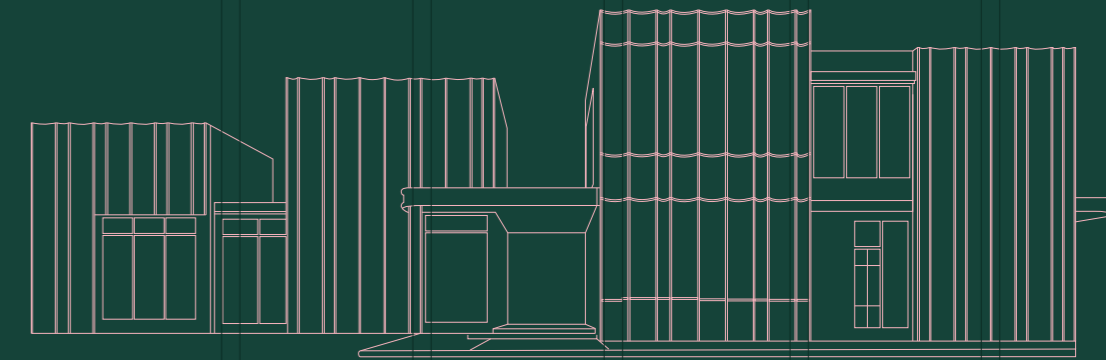


AIRI
SUKHUMVIT
BANGNA
KM.5

MY PLACE
MY ATTITUDE



MY PLACE
MY ATTITUDE



Airi

Sukhumvit-Bang Na km 5

Exquisiteness awaits at your doorstep.

Originated from 'Timeless Design' philosophy,
reflecting each individual's refined taste.
Attentive to every detail to reveals your true essence.

PROJECT *INFO*

Project area : 12-0-65.5 Rai

No. of Residence : Exclusive for only 40 families

Type : 2-story detached house

- Lapis style
- Maroon style





MY NEIGHBOUR- HOOD

The ultimate prime location at Bang Na km 5, offering complete lifestyle hubs. A future location for the new CBD of Bangkok's eastern side, seamlessly connecting to the city center with ease.





MY PERFECT PLACE

MY HEALTHCARE CENTERS*



- WIH Hospital 2.5 Km
- Synphaet Srinakarin Hospital 4.2 Km
- Sikarin Hospital 4.6 Km
- Princ Hospital Suvarnabhumi 6.7 Km
- Thai Nakarin Hospital 7.1 Km

MY COMMUNITY CENTERS*



- Index Bangna 1.0 Km
- Chic Republic 3.0 Km
- Mage Bangna / IKEA 5.0 Km
- Bangkok Mall 5.5 Km
- Central Bangna 6.0 Km

MY NEAR BY STREETS*



- Bang-Na Trad Road 1.0 Km
- Expressway 6.8 Km
- Sukhumvit Road 15.4 Km

* Estimated distance from Google Map

MY KNOWLEDGE CENTERS*



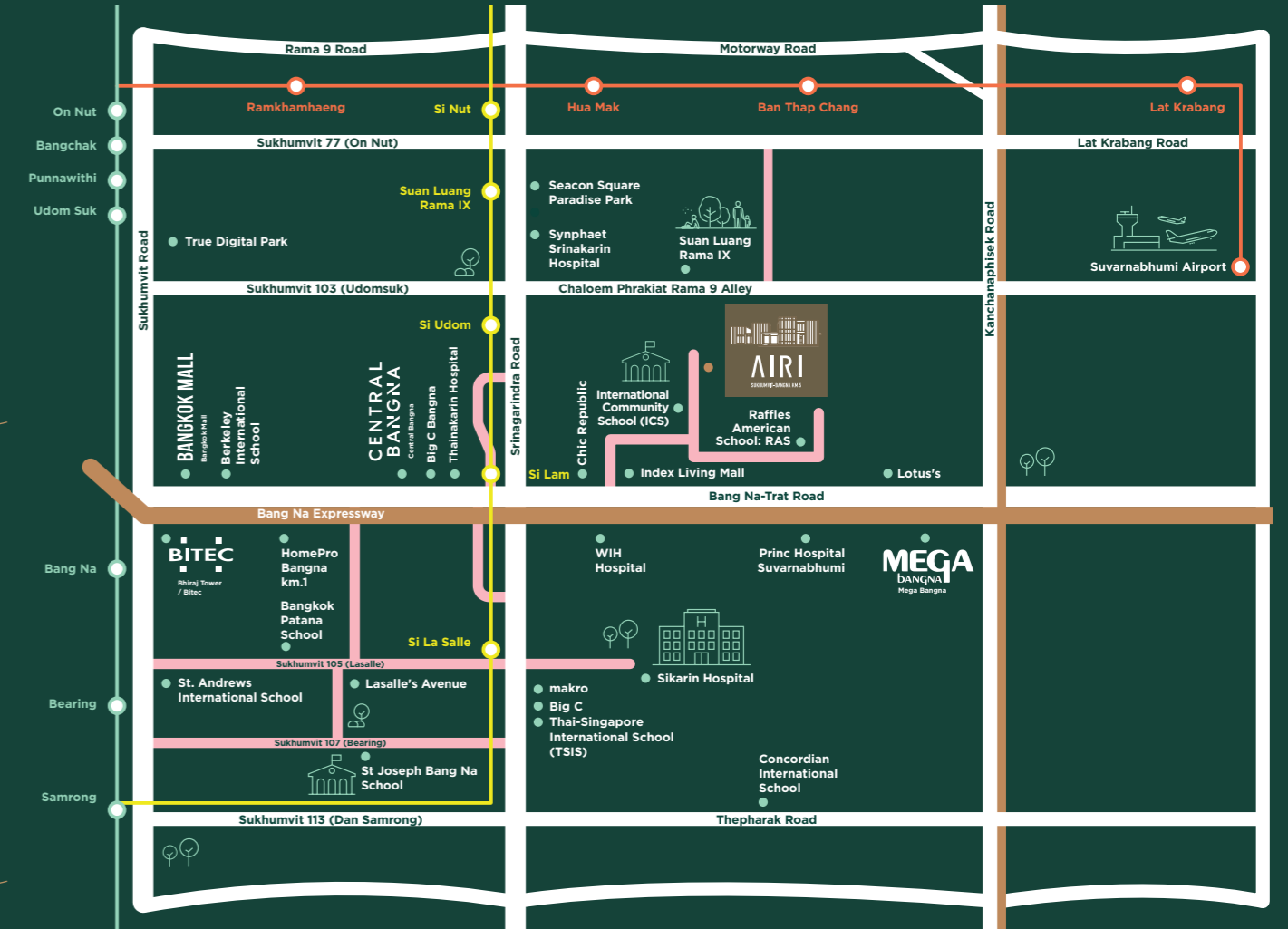
- International Community School 0.6 Km
- Raffles American School RAS 1.0 Km
- Concordian International Scholl 6.7 Km
- Bangkok Patana School 7.0 Km
- Thai-Singapore International School 8.5 Km
- Berkely international School 8.6 Km
- St.Andrews International School 8.8 Km

MY PLACE HIGHLIGHTS*



- Suanluang R.9 3.7 Km
- Suvarnabhumi Airport 22 Km

* Estimated distance from Google Map



- Green Line (Mo Chit - Bearing)
- Red Line Commuter Train (Phaya Thai - Suvarnabhumi)
- MRT Yellow Line (Lat Phrao-Samrong)

MY AESTHETIC

The Elegance of Simplicity
Through Contemporary, Timeless Design

The building's facade is inspired by the luxurious elegance of classic architectural columns, where arched elements are blended with modern design. No matter how much time passes, Airi's design will embody Timeless Elegance.



AIRI PRESTIGE CLUB
Uniqueness is reflected in every detail



AQUA LAP POOL
25M Semi-Olympic Pool

LAPIS

Exquisite luxury. Design inspired by lapis, the timelessly opulent blue gemstone. Reflecting stability, subtlety, depth, and unique lifestyle.

Land area starts at 72 sq.wa

Usable area 369 sq.m.



4 Bedrooms



5 Bathrooms



Double Living Room



Kitchen & Pantry



Service Area



3 Parking space

These messages and mock-up pictures are for advertising purposes only.
The company reserves the rights to change any detail at any time without prior notice

Usable area might be varied in accordance with the land area



These messages and mock-up pictures are for advertising purposes only. The company reserves the rights to change any detail at any time without prior notice



VISTA GRANDE DINING

Embrace the natural light and greenery from the garden through our magnificent 5.8M wide window.

Mock-up pictures for advertising purposes only

Mock-up pictures for advertising purposes only

LAPIS

Embrace natural light and connect yourself to nature through our 5.8M wide window that seamlessly integrates indoor and outdoor lifestyle.

Open Living & Dining Area

A spacious recreational area designed to bring residents harmoniously close to the garden, making this area the family's favorite place to enjoy and relax.

Service Area

The spacious Thai kitchen is directly connected to the housekeeper's room and the washing area, ensuring maximum convenience.

Grand Master Bedroom

Featuring a spacious walk-in closet connected to a his-and-her bathroom, complete with a luxurious tub

Bedroom 3

A space of ultimate comfort, fitted with a large daybed.

Bedroom 2

A large room with a walk-in closet.

First-floor Bedroom is designed with seniors in mind, featuring a soft floor to minimize impact and enhance comfort.

Semi-Outdoor Area invites the essence of nature into your residence, making your home the perfect sanctuary for family leisure

The 360 Courtyard allows you to immerse in greenery from anywhere within the house, always surrounding your crafted lifestyle with a touch of nature.

A spacious balcony for fully indulging in the panoramic view.

1st Floor Plan

2nd Floor Plan

MAROON

A unique design that stands the test of time.
Inspired by radiant red gems that illuminate life,
vitality, and energy

Land area starts at 61 sq.wa

Usable area 332 sq.m.*



4 Bedrooms



5 Bathrooms



Double Living Room



Kitchen & Pantry



Service Area



3 Parking space



These messages and mock-up pictures are for advertising purposes only.
The company reserves the rights to change any detail at any time without prior notice

Usable area might be varied in accordance with the land area

These messages and mock-up pictures are for advertising purposes only. The company reserves the rights to change any detail at any time without prior notice

MASTER BEDROOM

Featuring a spacious L-shaped master bedroom with a private living area and a walk-in closet.



Mock-up pictures are for advertising purposes only.

Mock-up pictures are for advertising purposes only.

MAROON

Embrace natural light and connect yourself to nature through a majestic window that seamlessly integrates your indoor and outdoor lifestyle.

Open Living & Dining Area

A spacious recreational area designed to bring residents harmoniously close to the garden, making this area the family's favorite place to enjoy and relax.

First-floor Bedroom is designed with seniors in mind, featuring a soft floor to minimize impact and enhance comfort.



Semi-Outdoor Area invites the essence of nature into your residence, making your home the perfect sanctuary for family leisure.

Service Area

The spacious Thai kitchen is directly connected to the housekeeper's room and the washing area, ensuring maximum convenience.

1st Floor Plan

Large Master Bedroom
Featuring a private living space and a walk-in closet.



Bedroom 3

A space of ultimate comfort, fitted with a large daybed.

Bedroom 2

A large room with a walk-in closet.

A spacious balcony for fully indulging in the panoramic view.

2nd Floor Plan

MY SERENITY

FACILITY & NATURE AROUND HOME

- AIRI PRESTIGE CLUB
- AQUA LAP POOL
- VIGOR GYM
- SERENE PARK
- KIDSPIRE
- FIT KIDS

These messages and mock-up pictures are for advertising purposes only. The company reserves the rights to change any detail at any time without prior notice.



These messages and mock-up pictures are for advertising purposes only. The company reserves the rights to change any detail at any time without prior notice.



MY
EXQUISITE
LIVING

6 SECURITY SYSTEMS

A safe space for your loved ones.

These messages and mock-up pictures are for advertising purposes only. The company reserves the rights to change any detail at any time without prior notice



These messages and mock-up pictures are for advertising purposes only. The company reserves the rights to change any detail at any time without prior notice

- License Plate Recognition System (LPR)
- VDO Door Phone
- 24 hours security system in all areas
- Magnetic and Shock sensor, extra security for your residence
- CCTV in all areas of the project
- CCTV for the parking area inside the house
- Home automation for your electrical system and lighting control



FACING AROUND *SERENE PARK*

Exclusive to Only 40 Families.

Live a life filled with peace and privacy. The front side of every unit faces the lush greenery of the gorgeous communal Serene Park while your private garden surrounds the others, letting you deeply breath in fresh air from every direction.



AIRI SUKHUMVIT-BANGNA KM.5

FACTSHEET

Airi Sukhumvit-Bang Na km 5

Project Name :	Airi Sukhumvit-Bang Na KM.5
Project Owner :	Ananda Development Public Co. Ltd.
Project Location :	Bang Na-Trat 37, Bang Kaeo, Bang Phli, Samut Prakan
Project Area :	12-0-65.5 Rai
Land Size :	61-121 sq.wa.
No. of Residence :	40 units

Residence Type: 2-story detach house

- Lapis : 369 sq.m.* usable area. Land area starts at 72 sq.wa
- Maroon : 332 sq.m.* usable area. Land area starts at 61 sq.wa

Facilities : AIRI PRESTIGE CLUB , AQUA LAP POOL , VIGOR GYM , SERENE PARK , KIDSPIRE , FIT KIDS

* Usable area might be varied in accordance with the land area

The Airi Sukhumvit-Bang Na KM.5 project and land are owned by Ananda Development Public Company Limited. Registration no.01707554000119 (Head office). The company's office is located at 99/1 Village 14, Windmill Village, Bang Na-Trat Road (KM. 10.5), Bang Pli Yai Subdistrict, Bang Phli District, Samut Prakan Province, with a registered capital of 478,456,715.70 Baht (Four hundred seventy eight million, four hundred fifty six thousand, seven hundred fifteen Baht and seventy satang) and paid-up capital of 416,625,515.70 Baht. (Four hundred sixteen million, six hundred twenty five thousand, five hundred fifteen Baht and seventy satang). The Managing Director is Mr. Semsak Khwanpuang. The project is situated in Bang Na-Trat 37, Bang Kaeo Subdistrict, Bang Phli District, Samut Prakan, on land no.1. The land title deed is number 177400, Bang Na-Trat 37, Bang Kaeo Subdistrict, Bang Phli District, Samut Prakan. The project area includes a central area of approximately 12-0-65.5 Rai. The public utilities and services include reinforced concrete road, drainage systems, sidewalks, project fencing, public gardens, pocket gardens, and underground electrical systems throughout the project. Construction started around June 2023 and is expected to be completed by 31 December 2025. The land can be transferred immediately upon completion and full payment*. The company reserves the rights to change any detail at any time without prior notice. More information, please contact 02-316-2222.

YES, IT'S MY PLACE,
MY ATTITUDE.



AIRI PRESTIGE CLUB

AIRI

AIRI
SUKHUMVIT-BANGNA KM.5